



GM1000 Gas Meter

Diaphragm Gas Meter

Overview

The H2O Degree GM1000 gas meter is made to accurately measure gas appliances in submetering applications. The aluminum construction along with the sealed register allows it to be installed in many applications. This meter is designed for indoor locations, however the pulse output allows for integration of remote totalizers and radio frequency devices.

Features

- The H2O Degree GM-1000 is a gas submeter.
- Monitor natural gas and LPG.
- Aluminum body.
- Sealed Register
- Designed for indoor Installation.
- Equipped with pulse output to interface with H2O Degree wireless mesh network.
- California Approved (CTEP)
- National Approved (NTEP)



Ordering Information

Model

GM1000
M54130
M54230
M54232

Description

GM1000 Diaphragm Gas Meter
M54130 Four Channel Pulse Counter
M54230 Two Channel Battery Powered Pulse Counter
M54232 Two Channel Battery Powered Pulse Counter with Display

3/2017

H2O Degree

3580 Progress Drive, Suite L
Bensalem, PA 19020

www.h2odegree.com
(215) 788-8485
info@h2odegree.com



GM1000 Gas Meter

Diaphragm Gas Meter

Technical Specifications

Technical Specifications

Use: Natural gas & LPG

Cyclonic Volume: 0.42ft³

Operating Temperature: -4 degrees F to +122 degrees F

Storage Temperature: -4 degrees F to +122 degrees F

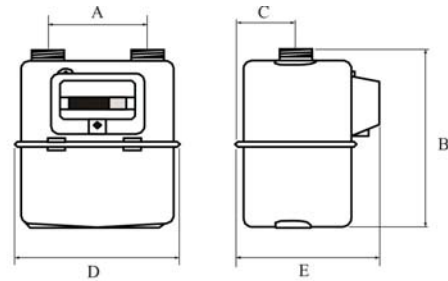
Maximum Operating Pressure: 7.25 PSI

Measuring Range: Qmin 1.4 ft³/hr Qmax 211 ft³/hr

Pulse Transmitter: LF-system, 12 VDC Max,

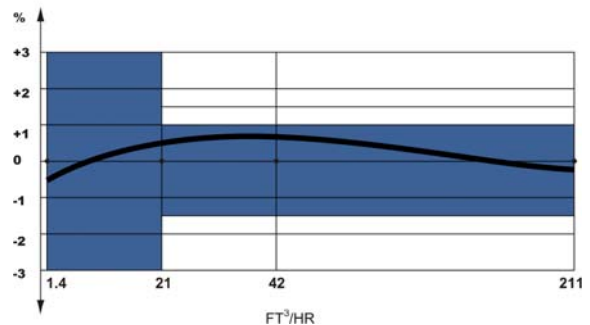
Pulse Value: 1/1 cf or ft³

Dimensions & Accuracy Chart



Meter Case Material	A in	B in	C in	D in	E in	Wt lb	Connection Threads
Aluminum	4.3	9.1	2.8	8.1	6.7	4.0	1/2" NPT

Typical accuracy curve



Ordering Information

Model	Description
GM1000	GM1000 Diaphragm Gas Meter
M54130	M54130 Four Channel Pulse Counter
M54230	M54230 Two Channel Battery Powered Pulse Counter

3/2017