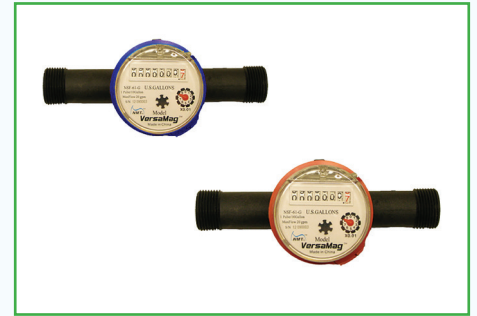


Features

- The H2O Degree WM-1100 is a pulse equipped 3/4" x 7 1/2" lay length multi-jet cold water meter for submetering applications. Meter is available for either hot or cold water applications.
- 5/8" x 3/4" size.
- Pulse Value: 1/10 gal. (standard), 1/1 gal. (specify when ordering.)
- Removable register allows for pressure tests and line flush outs without damaging internal components.
- Installation in horizontal position while adhering to AWWA C708 accuracies.
- State of California Approved.
- National Approved (NTEP) Certificate # 12-101.
- NSF-61-G Certified.
- Meets AWWA C708 Standards.
- Normal flow rate: 1-20 gpm (+/- 1.5%).
- Max Pressure: 150 psi.
- Max working temperature: 105 degrees F.
- The WM-1100 series water meter has a maximum flow rate of 20 gallons per minute with a pressure loss of approximately 12 psi at the stated maximum flow rate. For additional details visit the full specifications at www.h2odegree.com.
- Five year warranty.



Overview

The WM-1100 hot or cold water meter is the most versatile multi-jet type water meter available for submetering applications.

Along with its compact design, the removable register allows for pressure tests and line flush outs without damaging the internal components.

The WM-1100 is capable of being installed in a horizontal position while adhering to AWWA C708 accuracies.

With all of these features, the WM-1100 is the complete meter for any submetering application.

Ordering Information

Model	Description
WM1100C	Cold Water Meter 3/4 inch 20 gpm POLY 1 pulse/gallon (CA approved) includes couplings
WM1100H	Hot Water Meter 3/4 inch 20 gpm POLY 1 pulse/gallon (CA approved) includes couplings
WMST075	3/4 inch x 7.5 inch Spacer tube - for use with WM1000 WM1100 WM1500 series meters
M54130	Line Powered Pulse Counter - Indoor (4 channels)
M54130-O	Line Powered Pulse Counter - Outdoor (4 channels)
M54230	Battery Powered Dry Contact Pulse Counter - Indoor (2 Channel)
M54232	Battery Powered Dry Contact Pulse Counter w/ Display indoor (2 Channels)

Technical Specifications

Material: 50% glass-reinforced nylon polymer

Max Flow Rate: 20 gpm

Normal Flow Rate (+/- 1.5%): 1-20 gpm

Nom Flow Rate: 15 gpm

Min Flow Rate (+/- 3%): 1/4 gpm

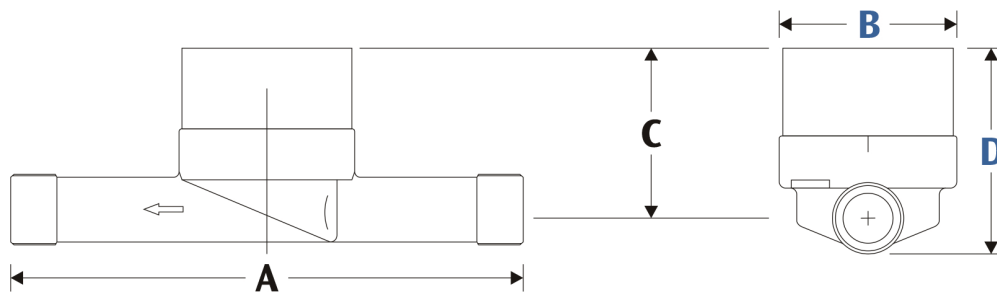
Max Work Pressure: 150 psi

Max Working Temp: 160 degrees F (Hot water meter), 105 degrees F (Cold water meter)

Nom Pipe Size: 3/4"

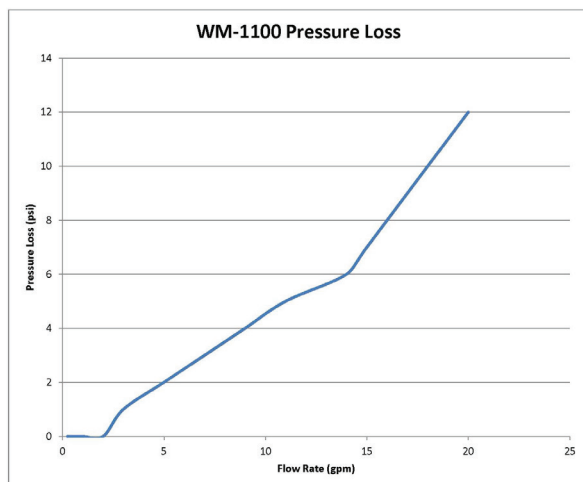
Pulse Value: 1/10 gal (standard) 1/1 gal (available)

Dimensions



A - 7.5"
B - 2.5"
C - 3.6"
D - 4.2"
Wt 0.75lb

Pressure Loss Curve



Accuracy Chart

