

## Overview

H2O Degree offers a variety of power supplies for its products.

The power supplies include:

- 120 VAC wall plug
- 24 VAC low voltage power supply
- 120/240 VAC junction box
- 120/240 VAC transformer

The various power supplies provide complete flexibility and customization for each application based on the existing electrical configuration and distance requirements.

The power supplies are suitable for new or retrofit projects.



## Features

### Four High Voltage (120VAC/240 V AC) to DC voltage Power Supplies North American Wall Plug adapter—Input 120/240 AC to DC voltage

#### **PS1001**

- Up to 6 watts power, efficiency level V
- Compact size (H 1.65", L2.45", W 1.055"), UL safety approvals
- Over voltage and short circuit protection
- Single output 9 volt DC, output connection female plug
- Operating temperature -10 to 70 degrees C

#### **PS1003**

- Up to 6 watts power, efficiency level V
- Compact size, (H 1.65", L2.45", W 1.055"), UL safety approvals
- Over voltage and short circuit protection
- Single output 4.5 volt DC, output connection female plug
- Operating temperature -10 to 70 degrees C

### Terminal block connection Power supply—Input 120/240 AC to DC voltage

#### **PS1000**

- Up to 5.5 watts power, efficiency 78%
- Single output 12 volt DC, output connection 2 terminal connections
- Over voltage, over temperature, and short circuit protection
- Encapsulated compact size, (H 0.993", L 2.992", W 1.24"), UL safety approvals
- Operating temperature -10 to 70 degrees C

### Junction box Power supply—Input 120/240 AC to DC voltage

#### **PS1008**

- Up to 15.6 watts power, efficiency 81%
- Compact size, (H 2.0", L 6.0", W 4.0"), UL safety approvals
- Single output 12 volt DC output connection two terminal connections
- Over voltage, over temperature, and short circuit protection
- Operating temperature -10 to 70 degrees C

### Two High Voltage (120VAC/240 VAC) to Low Voltage 24 VAC Transformer Plug in Transformer—Input 120/240 AC to 24 Volt AC

#### **PS1005**

- Compact size, (H 3.35", L 1.88", W 2.50"), UL safety approvals
- Single output 24 volt AC, 0.8 amp (20 A)
- Output connection two terminal connections
- Operating temperature 0 to 50 degrees C

### One High Voltage (120VAC/240 VAC) to Low Voltage AC Transformer Transformer—Input 120/240 AC to 24 Volt AC

#### **PS1009—Stand Alone**

- Compact size, (H 1.437", L 2.375", W 1.437"), UL safety approvals
- Single output 24 volt AC, 0.25 amps (5 VA)
- Output connection two 20 AWG wire nuts
- Operating temperature -10 to 70 degrees C

#### **PS1010—Wall Mount**

- Compact size, (H 1.437", L 2.375", W 1.437"), UL safety approvals
- Single output 24 volt AC, 0.25 amps (5 VA)
- Output connection two 20 AWG wire nuts
- Operating temperature -10 to 70 degrees C

## Features

### Two Low Voltage (24 VAC) to DC Power Supplies

#### PS1006

- Compact size, (H 0.6", L 4.25", W 0.6")
- Wide input voltage range 16-36 VAC
- Single output 4 volt DC output connection two 20 AWG wire nuts
- Operating temperature -10 to 70 degrees C

#### PS1007

- Compact size (H 0.6", L 4.25", W 0.6"),
- Wide input voltage range 16-36 VAC
- Single output 12 volt DC output connection two 20 AWG wire nuts
- Operating temperature -10 to 70 degrees C

## Technical Specifications

### Wall Plug

#### Electrical

Voltage input 100-132 volts AC 50/60 Hz

Voltage output 4.5 volts DC

PS1001 voltage output 9 volts DC at 0.67 amp

PS1003 voltage output 9 volts DC at 0.67 amp

#### Physical

Color black

Weight/shipping weight <8 oz/1.0 lbs

#### Warranty

Two Years

### 24V Transformer

#### Electrical

Voltage input 110-240 volts AC 50/60 Hz

Voltage output 24 volts AC at 0.25 amps (5 VA)

#### Physical

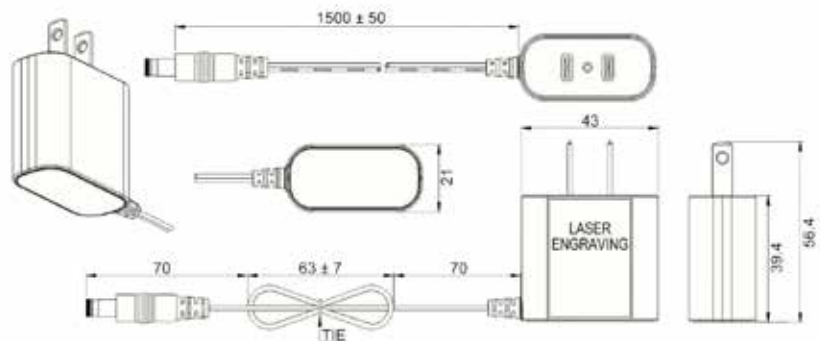
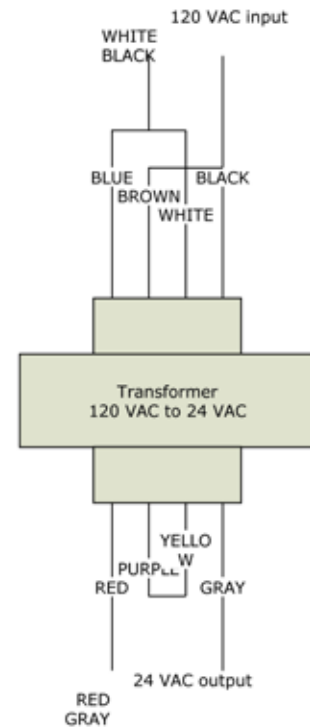
H x W x D: 1.437 x 2.375 x 1.437 inches

Color gray

Weight/shipping weight <8 oz/1.0 lbs

#### Warranty

Two Years



## Ordering Information

Model	Description	Model	Description
PS1001	Wall plug - 120/240 VAC to 9 VDC, 0.67 amp	PS1008-05	Junction box - 120/240 VAC to 5 volts
PS1003	Wall plug - 120/240 VAC to 4.5 VDC, 0.67 amp	PS1008-12	Junction box - 120/240 VAC to 12 VDC
PS1005	Wall plug - 120/240 VAC to 24 VAC, 0.8 amp	PS1009	Transformer & Housing - 120/240 VAC to 24 VAC
PS1006	Low Voltage - 24 VAC to 4.0 VDC, 250 mA	PS1009-T	Transformer - 120/240 VAC to 24 VAC
PS1007	Low Voltage - 24 VAC to 12 VDC, 240 mA	PS1010	Transformer - 120/240 VAC to 24 VAC